

INVERMAY PRIMARY SCHOOL

Information Booklet 2025



Invermay Primary School

35-43 Mayne Street

Invermay Tas 7248

Ph (03) 6331 8371

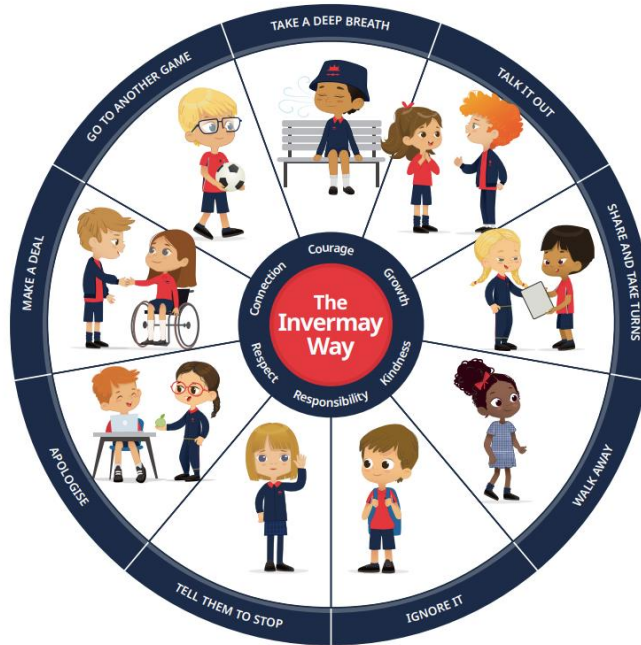
Email: invermay.primary@decyp.tas.gov.au

Website: <https://invermayps.schoolzineplus.com>

Invermay Primary School

Dear Friends and Families,

I warmly welcome you to our beautiful school community. At Invermay we work in partnership with our children and families to ensure we are connected to our place, space and people. At Invermay, we live by the 'Invermay Way' values, and we always act with respect and kindness.



We live by our Department for Education, Children and Young People Values of:



At Invermay we ensure that we take a 'learners first approach' and we place value on ensuring every member of our learning community feels a strong sense of belonging and connection. We are mindful of supporting positive mental health in our students and encouraging students to strive for opportunities to shine, grow and flourish. Our shared purpose is to ensure that every person of Invermay feels known, safe and well and that they are committed to **'Learning Today, to achieve tomorrow.'**

At Invermay we instil the attributes of 'Grit, Integrity, Creativity and Health.'

<i>Creativity</i>	INTEGRITY	Health	GRIT
Intensely curious, welcoming new opportunities and ways of doing things, flexible in thought and action, willing to take appropriate risks to extend capacity.	Valuing honesty and openness, taking responsibility and accountability for actions, demonstrating reliability and trustworthiness, expressing gratitude and displaying empathy to others.	Growing strong and respectful relationships with individuals and our community, curious about emotions and how to manage them, aware of own body and choosing to respect it, self-aware and able to seek support when needed.	Having a clear sense of meaning and purpose, willing to practice and apply effort to move towards it, flexible and patient even when unexpected obstacles show up, able to learn from challenges without losing hope.

We are a Trauma informed school and staff are trained in working through obstacles with a restorative approach. We have a 'Hive' that supports students to work flexibly if required.

We have a Social Worker, School Psychologist, Speech Pathologist and School Chaplin who all work from our site throughout the school week. Our Processional Support team are integral in us supporting our commitment to a healthy, well, informed learning community.



Introducing our Leadership Team

- Principal: Mrs Carolyn Sutton
- Assistant Principal: Mrs Raelene Beckett
- School Business Manager: Mr Graeme Hodges
- 3-6 AST: Mr Alex Kerrison
- P-2 AST: Mrs Bridget Dunn
- Safeguarding Lead: Mrs Gina Campbell

Introducing our programs:

Kindergarten:



At Invermay we run an 18 hour Kindergarten program. Students are invited to attend three days a week.

Launching into Learning:



Please access our Launching into Learning Program Information brochure from our school. We regularly update and change our Birth-5 year old program options and we look forward to welcoming new community members throughout the year. In 2025, our regular LIL day will be Tuesdays (Kinder building) and additional sessions / days may be offered.

Physical Education:



Invermay offers a Daily Physical Education fitness program and weekly Physical Education skill-based lessons and in the upper primary years, participate in sporting teams.

Music:



All students have access to weekly music lessons and an opportunity to join in events such as Singfest and Launceston Competitions. Students can also participate in Dance Fever and school choirs.

Additionally, Students of Invermay are offered Drama, Science, STEM / STEAM and Library lessons on a rotational basis.

Leadership Opportunities:



Our Upper Primary Students are supported to take on key leadership roles across our school. All students from Year 1 - 6 are also offered opportunities to join our Student Voice Committee / SRC.

School Term Dates for Students in 2025

Term 1: Thursday 6 February to Friday 11 April

Term 2: Monday 28 April to Friday 4 July

Term 3: Monday 21 July to Friday 26 September

Term 4: Monday 13 October to Thursday 18 December

Professional Learning Days 2025 (students do not attend School)

2025 Student Free Days

Date	School Years	Region
Friday, 6 June	K-12	Statewide
Friday, 24 October	K-10	South only
Friday, 31 October	K-10	North only

School Times:

- 8.30 – 8.50 - Gates Open
- 8.50 – 10.50 – Learning Block 1
- 10.50-11.20 – Recess
- 11.20-11.35 – Daily PE
- 11.35-12.55 – Learning Block 2
- 12.55- 1.30 – Lunch
- 1.30-2.50 – Learning Block 3

2025 Term Dates

January

Mo	Tu	We	Th	Fr	Sa	Su
		1	2	3	4	5
6	7	8	9	10	11	12
13	14	15	16	17	18	19
20	21	22	23	24	25	26
27	28	29	30	31		

February

Mo	Tu	We	Th	Fr	Sa	Su
					1	2
3	4	5	6	7	8	9
10	11	12	13	14	15	16
17	18	19	20	21	22	23
24	25	26	27	28		

March

Mo	Tu	We	Th	Fr	Sa	Su
					1	2
3	4	5	6	7	8	9
10	11	12	13	14	15	16
17	18	19	20	21	22	23
24	25	26	27	28	29	30
31						

April

Mo	Tu	We	Th	Fr	Sa	Su
	1	2	3	4	5	6
7	8	9	10	11	12	13
14	15	16	17	18	19	20
21	22	23	24	25	26	27
28	29	30				

May

Mo	Tu	We	Th	Fr	Sa	Su
			1	2	3	4
5	6	7	8	9	10	11
12	13	14	15	16	17	18
19	20	21	22	23	24	25
26	27	28	29	30	31	

June

Mo	Tu	We	Th	Fr	Sa	Su
						1
2	3	4	5	6	7	8
9	10	11	12	13	14	15
16	17	18	19	20	21	22
23	24	25	26	27	28	29
30						

July

Mo	Tu	We	Th	Fr	Sa	Su
	1	2	3	4	5	6
7	8	9	10	11	12	13
14	15	16	17	18	19	20
21	22	23	24	25	26	27
28	29	30	31			

August

Mo	Tu	We	Th	Fr	Sa	Su
				1	2	3
4	5	6	7	8	9	10
11	12	13	14	15	16	17
18	19	20	21	22	23	24
25	26	27	28	29	30	31

September

Mo	Tu	We	Th	Fr	Sa	Su
1	2	3	4	5	6	7
8	9	10	11	12	13	14
15	16	17	18	19	20	21
22	23	24	25	26	27	28
29	30					

October

Mo	Tu	We	Th	Fr	Sa	Su
		1	2	3	4	5
6	7	8	9	10	11	12
13	14	15	16	17	18	19
20	21	22	23	24	25	26
27	28	29	30	31		

November

Mo	Tu	We	Th	Fr	Sa	Su
					1	2
3	4	5	6	7	8	9
10	11	12	13	14	15	16
17	18	19	20	21	22	23
24	25	26	27	28	29	30

December

Mo	Tu	We	Th	Fr	Sa	Su
1	2	3	4	5	6	7
8	9	10	11	12	13	14
15	16	17	18	19	20	21
22	23	24	25	26	27	28
29	30	31				

Please note, these dates are statewide for Kindergarten to Year 10 in Tasmanian Government Schools. Years 11 and 12 dates may differ so please check the Department for Education, Children and Young People website: www.decyp.tas.gov.au

The above calendar does not include regional public holidays. For full listings of local area public holidays please visit: www.worksafe.tas.gov.au

Published: November 2024



State of Tasmania
(Department for Education,
Children and Young People)

- School Holidays
- School Terms (Note: Years 11 and 12 Term 4 end date will differ)
- Statewide Public Holiday
- Teachers Start/Finish (K-10)
- College Teachers Start/Finish (11-12)
- Moderation / Statewide Professional Learning Day (K-12) / Student Free Day
- Professional Learning Day K-10 (South only) / Student Free Day
- Professional Learning Day K-10 (North only) / Student Free Day

Breakfast Club



Breakfast Club is offered on a Wednesday and a Friday from 8.30am. The breakfast club is free of charge, runs from our Kinder building and is a wonderful way for you and your family to start the day.

Canteen:

Our Canteen is subject to ongoing changes and refinements. Information will be provided to families through a note home, newsletter and our Face book page as changes occur. Canteen orders are placed through the QKR App or via the classrooms with cash.

Move Well, Eat Well:

As a 'Move Well, Eat Well' School, we encourage healthy lunchboxes and water only drinks for school

Newsletter:

Our Swampie News is available through our Skoolzine app and our Facebook page. Swampie news has weekly calendar updates with a *Bumper Addition* of our news and celebrations provided once termly.

Assemblies:

We invite families to join us for our significant assemblies each term.

Our early childhood and primary assemblies are held twice termly, with special assemblies included throughout the year. Our Swampie News calendar will keep you updated with assembly dates and times.

School Association:

All families are encouraged to join our School Association and/or Fundraising Committee. We love to meet new families and we value working together to achieve new opportunities and offer additional experiences for our children. Information on meeting dates is provided in our Swampie News calendar.

Payment Information:

Levies for 2025

Year level	What is included	Total levy
Kindergarten	Stationery, excursions, learning materials, school hat, reading bag	\$220.00
Prep – Year 2	Stationery, excursions, learning materials	\$240.00
Years 3 - 4	Stationery, excursions, learning materials, Swimming & Water Safety Program	\$260.00
Years 5 - 6	Stationery, excursions, learning materials, inter-school sport, Swimming & Water Safety Program (Year 5)	\$270.00

Supplied by the school:

- Kindergarten: A library / home reader bag and school hat
- Year 3 students – Pencil case, school hat

Student Assistance Scheme - STAS:

To apply for student assistance, please contact the school office to complete a form or complete online.

Payment Options:

Levies are invoiced to families in February 2025 and can be paid via payment methods below:

- Through BPAY (using the Biller Code and Reference on your invoice)
- At the school (by EFTPOS, cash or cheque)
- At Service Tasmania (by EFTPOS, cash or cheque)
- By Centrepay (form collected from the admin office)

General information:

Attendance:

Please contact the school office on 63318371 to report any planned / unplanned absence from school or text on 0427 016 460.

Volunteering:

All families are very welcome to volunteer in our school. Please provide a valid WWVP card to the office and staff will provide you with a link to a video to complete before your first visit as a volunteer.

House Competitions:

All of our students are allocated to either of our School House Teams:

- Mayne – Red
- Holbrook – Blue

School Uniforms;



We take great pride in wearing our ‘Red on the top, blue on the bottom.’ All students are asked to wear their uniform each day. A winter skirt is available as well as a summer dress.

Medical Plans

Please provide the office with any relevant medical plans that your child may have – remembering to keep the office updated with any changes to plans that may occur. Medical Action Plans must be updated every year and signed by your doctor.

Sun Safe:

All students are provided a hat on enrolment and in Grade 3.. Replacement hats can be purchased for \$10 from the school office.

After School Events held throughout the year:

- Term 1 – Welcome BBQ
- Terms 1 and 2 - Parent – Student – Teacher meetings
- Term 3 – Ivan Neville Art Gallery Afternoon and Open Classroom event
- Term 4 – Christmas Carols
- Reports are provided in Term 1, Term 2 and Term 4.

Book Week:



Additionally, in Odd Years (ie 2025) our school participates in a Book Week dress up parade. On even years (ie 2026), our school will host alternative book week celebrations that do not included dressing up

In Closing, at Invermay Primary School, we value family and community input to support each child to prosper. We encourage our families to join us at every opportunity to set learning goals, attend school community celebration events, and regularly touch base with teaching staff to check in on your child's goals and progress. Our school is committed to working in partnership with families and value your input and engagement with us.

Invermay Primary School is a wonderful place to learn, play and connect with others. I look forward to sharing your child's learning journey with you,

Carolyn Sutton

Principal